

SUMIDA CODE 4581-0089

**DC-AC
INVERTER UNIT SPECIFICATION**

PART NO : H05-4915

TYPE : IV002 (IV15112/T)

1. Application :

This is a DC-AC inverter unit to drive CCFT backlight lamp.
Lamp used :CHI-MEI 14.1",12.1",10.4" TFT for 1 CCFL LAMP

2. Connector pin assignment :

Input : CN1
Model No. : S5B-PH-SM
Supplier : JST




PIN	SYMBOL	
1	VIN VCC +12V	
2	GND	
3	Vadj	(0V~5V)
4	GND	
5	ON/OFF	(5.0V)

Output : CN2
Model No. : SM02B-BHSS-1-TB OR 87210-0200
Supplier : JST OR ACES

PIN	SYMBOL
1	H.V
2	RTN

3. Weight :

Approximately 7.5 gm.

CHK	CHK	DRG	SAMPLE NO : H05-400-4915
			SPEC NO: 3/17 TWS-444-862

TAIWAN SUMIDA ELECTRIC CO., LTD.

**DC-AC
INVERTER UNIT SPECIFICATION**

**TYPE
IV002 (IV15112/T)**

4. Electrical characteristics :

Input voltage range=12V±5%

**4-1: MAX BRIGHTNESS(Vadj: 0.0V) , LOAD=75KΩ
(Room temperature 25°C ± 3 °C)**

	SYMBOL	MIN	TYP	MAX	UNIT	REMARK
Input voltage	Vin	---	12	---	V	@ Vin = 12V Load=75KΩ
Input current	Iin	200	350	500	mA	
Frequency	f	56	60	64	KHz	
Output current	Iout	6.5	7.0	7.5	mArms	@ No Load
Open voltage	Vopen	1300	---	1600	Vrms	




**4-2: MIN BRIGHTNESS(Vadj: 5.0V) ,LOAD=75KΩ
(Room temperature 25°C ± 3 °C)**

	SYMBOL	MIN	TYP	MAX	UNIT	REMARK
Input voltage	Vin	---	12	---	V	@ Vin = 12V Load=75KΩ
Input current	Iin	50	100	150	mA	
Frequency	f	56	60	64	KHz	
Output current	Iout	3.0	3.5	4.0	mArms	

P.S

DIP SW CONTROL

SW1	SW2	IL
OFF	OFF	7mA
ON	OFF	6mA
OFF	ON	5mA
ON	ON	4.3mA

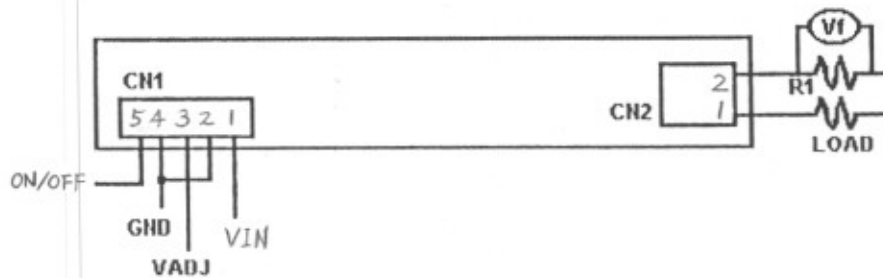
CHK	CHK	DRG	SAMPLE NO : H05-400-4915
			SPEC NO: 4/17 TWS-444-862

TAIWAN SUMIDA ELECTRIC CO., LTD.

**DC-AC
INVERTER UNIT SPECIFICATION**

**TYPE
IV002 (IV15112/T)**

5. Test circuit :



$V_{in} = 12\text{ V}$, $\text{Load} = 125\text{K}\Omega$, $R1 = 100\Omega$

6. Measuring instruments :

DC POWER SUPPLY : MODEL GPC-3030D GW
DC AMPERE METER : TYPE 2051 CLASS 1 YOKOGAWA
AC AMPERE METER : MODEL 2016 YOKOGAWA
DIGITAL MULTI-METER : 856C LEADER

7. ENVIRONMENTAL CONDITIONS

- 7.1 . STORAGE TEMPERATURE RANGE - 30 °C ~ + 80 °C
- 7.2 . STORAGE HUMIDITY RANGE 90 % MAX. (WITHOUT ICE OR DEW.
MAX.WET-BULB TEMPERATURE IS 35 °C)
- 7.3. OPERATING TEMPERATURE RANGE -10-60 °C
- 7.4. OPERATING HUMIDITY RANGE 85 % MAX. (WITHOUT ICE OR DEW.
MAX.WET-BULB TEMPERATURE IS 35 °C)

NOTE: ABOVE MENTIONED TEMPERATURE & HUMIDITY MEAN THE ONES OF THE POSITION WHERE THE UNIT PUT, BUT NOT THE ONES OF THE ENVIRONMENT WHERE THE SYSTEM WITH THIS UNIT WORKS.

CHK	CHK	DRG	SAMPLE NO : H05-400-4915
			SPEC NO: 5/17
			TWS-444-862